

STONE CLADDING SYSTEMS BY NORSTONE
THE EXPERTS AND MARKET LEADERS



NEW
OFF WHITE
SL (SLIMLINE)
ROCK PANEL™



NEW
CHARCOAL
MAXI
ROCK PANEL™

NORSTONE®: INNOVATORS & MARKET LEADERS

GLOBAL SUPPLIER OF PREMIUM NATURAL STONE

Norstone® is a natural stone supplier with its headquarters in Sydney, Australia. Founded in 2003 and still growing, Norstone's innovative, premium natural stone products are exported worldwide.

At Norstone, the entire manufacturing process, from quarry to finished product, is managed directly at our modern production facility in South East Asia.



During the past decade Norstone has achieved its extraordinary success by working in close cooperation with our network of carefully selected global distributors and the many employees who work tirelessly to produce our beautiful products. We all share the belief to never compromise on quality and service.

As a young dynamic company we nurture a culture of passion, integrity and self-belief in all our partners and employees. We inspire them to affirm our commitment for the respect of human rights, protection of our fragile environment and the reduction of our carbon footprint.

CLASSIC ROCK PANELS™

| | |
|--|-------|
| XLS | 06-07 |
| XLV | 08-09 |
| XLX | 10-11 |
| SL (Slimline) | 12-13 |
| Reveals and Copings | 14-15 |
| NEW PRODUCTS | 16-17 |
| AKSENT™ | 18-19 |
| LYNIA™ | 20-21 |
| PLANC™ | 22-23 |
| RUSTIK™ | 24-25 |
| WARRANTIES | 26-27 |
| CARING FOR YOUR STONE CLADDING | |
| Norseal H2o | 28-29 |
| LavaSeal | 28-29 |
| All-in-One Sealant | 28-29 |
| SUSTAINABILITY / ETHICAL POLICY STATEMENT | 30-31 |

ACHIEVE GREATNESS WITH EASE

HASSLE FREE INSTALLATION

Stacked stone used to be difficult, time consuming and expensive. Norstone has changed that with our proven stone veneer panel system, offering ease of installation and peace of mind with our unique warranty system.

Ideal for almost any interior and exterior applications

Now you can achieve superior results in a shorter time. Our rock panel system allows rapid installation and our exclusive corners significantly reduce the toil and expense involved in forming beautiful natural corners or columns.

The finished result is exceptional

Compared to building a traditional stacked stone wall, Norstone rock panels make it possible to cover a large wall in a short period of time because of their large size, superior panel system and simplicity of installation.

For all products refer to the installation guides on our website.

It is important before purchase to read the Conditions of Sale, Norstone Technical Library and Norstone Masterguide which can be viewed on www.norstone.co.uk



THE NORSTONE® ADVANTAGE

- ✔ exclusive designs and colour options that only Norstone can supply in 100% natural stone.
- ✔ independent global distributor network to assist with professional advice and guarantee supply.
- ✔ affordability; an entry-level price point that is superior value to the inferior generic competition.
- ✔ flexibility; from rock panels to interlocking basalt tiles and our new smaller scale stretched quartz tiles.
- ✔ minimise on-site costs with our unique rock panel system ensuring a rapid and simple installation.
- ✔ unique corner system; interlocking finger joints for internal and external corners (65 to 115 degrees).
- ✔ our legendary customer support; from a small domestic installation to a major commercial project, we are here to help every step of the way.
- ✔ exclusive warranty system; in conjunction with fellow market leaders Laticrete, we offer a warranty that no competitor can begin to match.

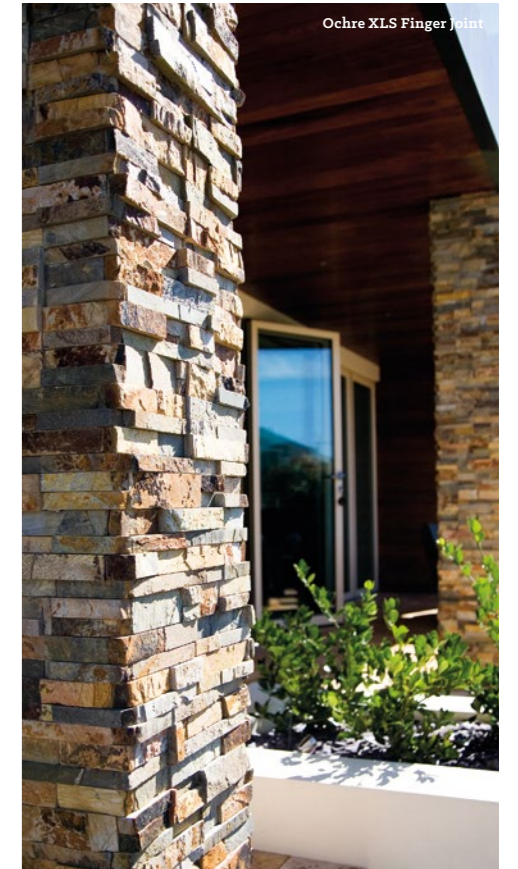
CORNERS MADE EASY



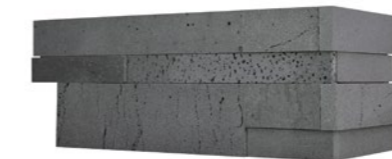
THE BEST FINGER-JOINT INTERLOCKING CORNER SYSTEM IN THE WORLD

Corners are an extremely important component to complete any project, which is why Norstone prides itself on its innovation of the only finger joint interlocking corner system in the world. The interwoven fingers deliver the most seamless look possible with a very distinctive and natural corner.

One section of the corner unit is longer than the other to allow an off set pattern on the adjacent walls. Because they require little skill and are so quick and easy to install they significantly reduce on-site labour costs.



① Silver Grey Quartz Lynia™



② Lavastone Graphite Aksent™



③ Ochre Rustik™



④ Planc™ Grey Basalt



⑤ Charcoal SL Slimline Rock Panel™

Corner Units are available for all Norstone ranges for the ultimate no hassle installation.

COLUMNS

Norstone finger joint corners are perfect for covering most columns which can be achieved rapidly without using unsightly butt joints, half overlay or time-consuming mitre cuts so commonly used by others.

CLASSIC ROCK PANELS™

XLS

Classic Design Stone Veneer System

INTERLOCKING STACKED STONE PANELS

If you're searching for the three-dimensional look of natural stacked stone, look no further than Norstone XLS Rock Panels™, a 100% natural stone cladding system which is ideal for both interior and exterior use. Rock Panels™ are machine cut, and their precision modular form ensures quick, easy and economical installation.

Our attractive and unique designs combine a natural feel with a classical elegance and an ultra-modern look that sets Norstone apart from more traditional stone wall and stone cladding panel products. XLS Rock Panels™ are suitable for interior and exterior use in the home, garden or commercial property.

The rock panels are handmade from between 15 and 18 selected pieces of machine cut natural stone and each panel is 100% unique in colour and design.



MATERIAL FINISH OPTIONS



Ochre Blend



Charcoal



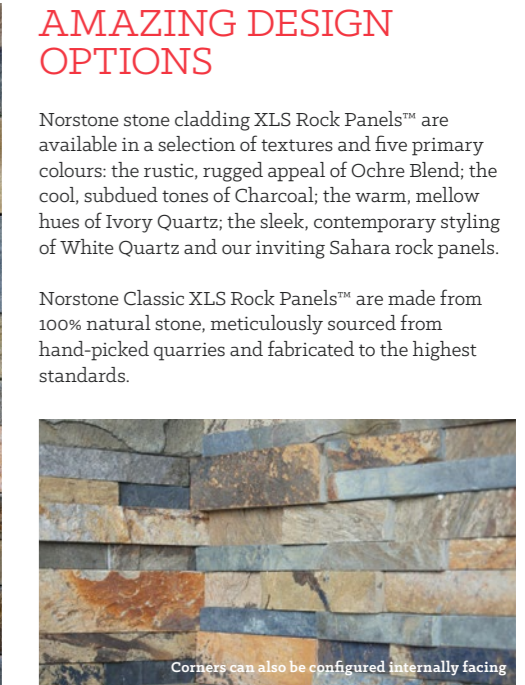
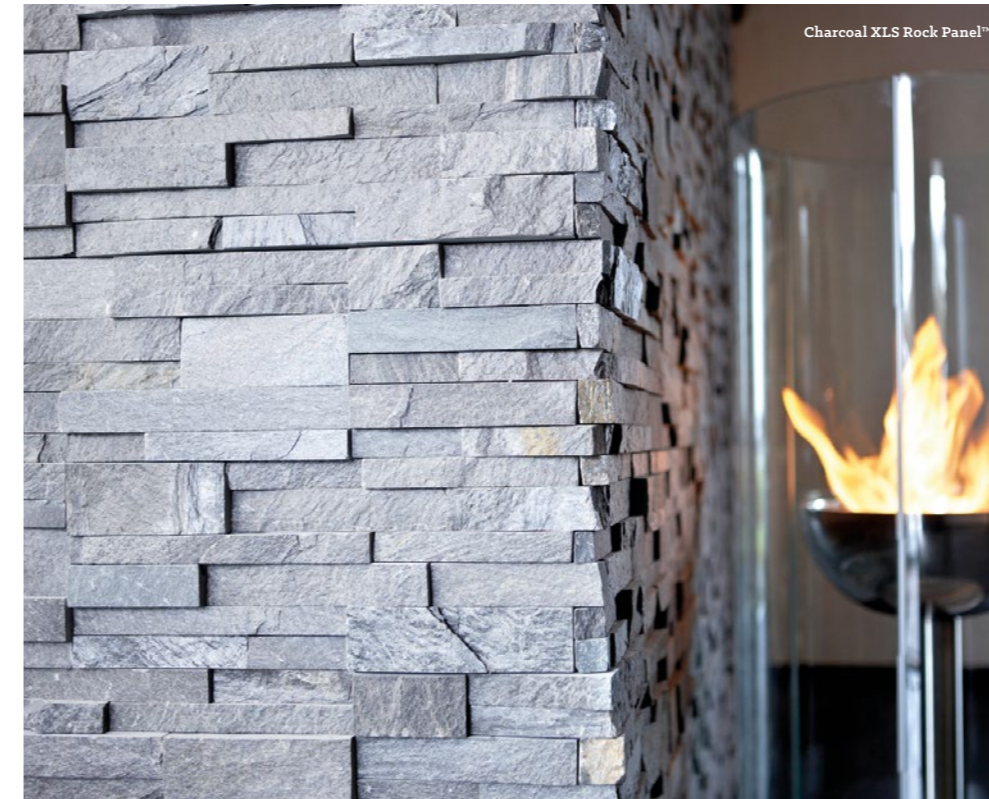
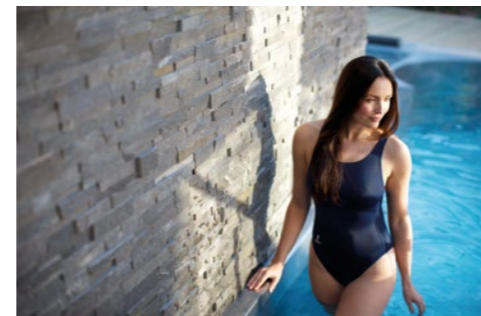
Ivory Quartz



White Quartz



Sahara



AMAZING DESIGN OPTIONS

Norstone stone cladding XLS Rock Panels™ are available in a selection of textures and five primary colours: the rustic, rugged appeal of Ochre Blend; the cool, subdued tones of Charcoal; the warm, mellow hues of Ivory Quartz; the sleek, contemporary styling of White Quartz and our inviting Sahara rock panels.

Norstone Classic XLS Rock Panels™ are made from 100% natural stone, meticulously sourced from hand-picked quarries and fabricated to the highest standards.

Corners can also be configured internally facing

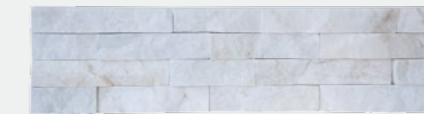
TECHNICAL SPECIFICATION



Material: Quartz, Quartzite.

Features: Highly calibrated interlocking stepped ends, industry leading corner design, natural end panels, 3D rough hewn finish.

Single XLS Panel



XLS Corner Unit



Unit Dimensions

| | |
|---------------|-------------------------------|
| Single Panel: | 152mm x 610mm |
| Honed Ends: | 152mm x 200mm + 152mm x 400mm |
| Corner Unit: | 152mm x 600mm |

Thickness: 15-35mm

Weight

| | |
|-------------------------------------|--------|
| Average Panel Weight: | 5kg |
| Average Weight per m ² : | 65kg |
| Weight per crate: | 1000kg |

Coverage

| | |
|-----------------------------|-------------------|
| Panels per m ² : | 10.75 |
| Box Coverage: | .37m ² |
| Panels per crate: | 4 |

Total coverage per crate: 17.5m²

CLASSIC ROCK PANELS™

XLV

Enhanced Design Stone Veneer System

SEAMLESS MADE SIMPLE

Possessing all the advantages and features of the renowned standard XLS Rock Panel™ system, the XLV Rock Panel™ range features larger individual pieces of natural stone, giving a chunkier, more robust look and feel.

Each rock panel comprises between 5 and 8 pieces and interlocks for seamless joins. Available in Charcoal, Ochre Blend, Sahara, Ivory and White.

Panel size is 152mm (h) x 610mm (l) with L shaped ends.

Our attractive and unique designs combine a natural feel with a classical elegance and an ultra-modern look that sets Norstone apart from more traditional stone wall and stone cladding panel products. Rock Panels™ are suitable for interior and exterior use in the home, garden or commercial property.

Like the originals, our XLV Rock Panels™ are made entirely by hand with carefully selected pieces of machine cut natural stone to give each and every panel a distinctly unique look and feel.



XLV ROCK PANELS

ROCK PANEL SERIES

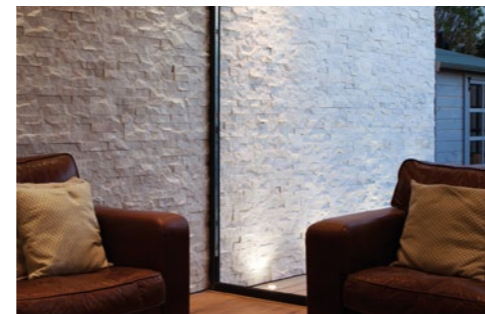
UNDERSTANDING THE BENEFITS OF NORSTONE ROCK PANELS™

- > The premium brand in the rock panel market
- > Unique interlocking internal and external corner system for 75° – 105° angles
- > Precision machine cut for accurate and perfect installations every time
- > Hand assembled, ensuring each rock panel is unique
- > Quick installation rates with no grouting required
- > Norstone Rock Panels™ will not shatter or splinter when cut or drilled
- > Norstone can be affixed to brick work/concrete/block work/cement backerboard/Hardie Walling (externally) and also on concave and convex surfaces
- > Small wastage on installation - less than 10%
- > Large amounts of rock panel stock warehoused in London allowing quick delivery
- > Norstone technicians to answer any questions and provide advice on installing our great rock panels
- > Complete and unique rock panel warranty solutions provided by Laticrete (adhesive) and Knauf / Hardie
- > Rock Panels can be used on feature walls, fireplace surrounds, kitchens, splashbacks, wetrooms, bathrooms, pools/water features, architectural walls, landscape/gardens.

MATERIAL FINISH OPTIONS



Ochre Blend Charcoal Ivory Quartz Aztec White Quartz Sahara



TECHNICAL SPECIFICATION

Material: Quartz, Quartzite.

Features: Highly calibrated interlocking stepped ends, industry leading corner design, natural end panels, 3D rough hewn finish.

Single XLV Panel



XLV Corner Unit



Unit Dimensions

| | |
|---------------|---------------|
| Single Panel: | 152mm x 610mm |
| Corner Unit: | 152mm x 600mm |

Thickness: 15-35mm

Weight

| | |
|-------------------------------------|--------|
| Average Panel Weight: | 5kg |
| Average Weight per m ² : | 65kg |
| Weight per crate: | 1000kg |

Coverage

| | |
|-----------------------------|-------------------|
| Panels per m ² : | 10.75 |
| Box Coverage: | .37m ² |
| Panels per crate: | 4 |

Total coverage per crate: 17.5m²

CLASSIC ROCK PANELS™

XLX

Large Format Stone Veneer System

BIGGER, BOLDER AND JOINT FREE

Our new XLX Rock Panel™ range with typically 10-12 individual pieces of stone per panel sits between our XLV (5-8 individual pieces) and XLS (15-18 individual pieces) ranges. These are almost double the size of the stone strips used in our standard XLS rock panels yet they still retain our signature stacked stone appearance making them perfect for expansive feature walls.

These hand assembled quartz based sedimentary panels are only suitable for interior use. The neutral colours will blend with any colour scheme.

Our attractive and unique designs combine a natural feel with a classical elegance and an ultra-modern look that sets Norstone apart from more traditional stone wall and stone cladding panel products. Rock Panels™ are suitable for use in the home or commercial and retail property where large surface areas need to be covered.



Aztec XLX Rock Panel™ (internal only)

XLX ROCK PANELS
ROCK PANEL SERIES

XLX COLOUR OPTIONS

Owing to the huge popularity of the Aztec range in the USA, we've decided to introduce this stunning, interior only, panel to our UK and European customers.

A softer, more neutral quartzite based sedimentary stone with all the advantages of Norstone's renowned style and craftsmanship.

Similar to the Ochre blend, these beautifully crafted Rock Panels have an amazing variety of colours and hues and offer a delightful, eye-catching finish to any walled surface.



Aztec (internal only)



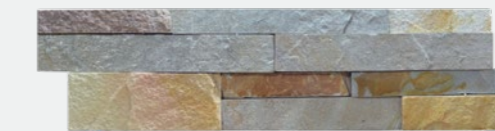
Aztec XLX Rock Panel™

TECHNICAL SPECIFICATION

Material: Quartz, sedimentary

Features: Highly calibrated interlocking stepped ends, industry leading corner design, natural end panels, 3D rough hewn finish.

Single XLX Panel



XLX Corner Unit



Unit Dimensions

| | |
|---------------|---------------|
| Single Panel: | 152mm x 610mm |
| Corner Unit: | 152mm x 600mm |

Thickness: 15-35mm

Weight

| | |
|-------------------------------------|--------|
| Average Panel Weight: | 5kg |
| Average Weight per m ² : | 65kg |
| Weight per crate: | 1000kg |

Coverage

| | |
|-----------------------------|-------------------|
| Panels per m ² : | 10.75 |
| Box Coverage: | .37m ² |
| Panels per crate: | 4 |

Total coverage per crate: 17.5m²

CLASSIC ROCK PANELS™

SL

Slimline Economy Stone Veneer System

EASY ON THE EYE, EASY ON THE BUDGET

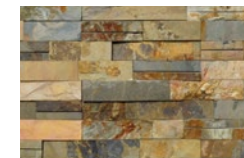
We understand the need for all (not just large!) projects to come in on budget and now you can have beautiful Norstone rock panels at an affordable price without compromising on quality.

Owing to popular demand, we've made our new Slimline SL Rock Panel™ stone cladding range available for domestic clients. Although originally designed and introduced specifically for large scale commercial use, we've been inundated with requests to supply this range for smaller and domestic projects.

Available in Ochre Blend, Charcoal and Off White, the Slimline (SL) range is slightly thinner and lighter and allows us to pass significant savings on to our clients. They are the same natural stone as our classic XLS and XLV ranges and the same size (610mm x 152mm) panels but weigh only approx. 55 kilos per m².

We've kept all the features that make Norstone the market leader in natural stone cladding; precision cut, hand assembled unique panels, interlocking corner joints that do away with the need for time-consuming mitre cuts, the highest quality natural stone and, of course, our unique dual warranty for complete peace of mind. They are also perfectly suited to use with our revolutionary new external backerboard on a timber framework, allowing for construction times you wouldn't think possible.

MATERIAL FINISH OPTIONS



Ochre Blend



Off White



Charcoal



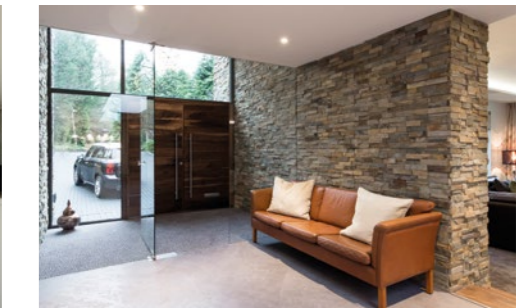
Off White SL Slimline Rock Panel™



SL ROCK PANELS
ROCK PANEL SERIES

CONTEMPORARY DESIGN FEATURES AT ECONOMY PRICING

- + Interlocking corners for neat and tidy simple joins
- + Lower weight and panel thickness for rapid, less effort assembly
- + Hand-crafted panels with diverse and attractive colouration and finishes
- + No grouting required
- + Manufacturer backed warranty when installed to Norstone technical specifications

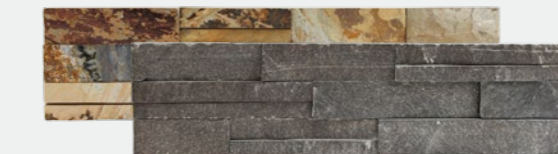


TECHNICAL SPECIFICATION

Material: Quartz.

Features: Highly calibrated interlocking stepped ends, industry leading corner design, natural end panels, 3D rough hewn finish. Thinner, lighter panels, 5 per box instead of 4.

Single SL (Slimline) Panel



Unit Dimensions

| | |
|---------------|-------------------------------|
| Single Panel: | 152mm x 610mm |
| Corner Unit: | 152mm x 400mm / 152mm x 200mm |

Thickness: Up to 30mm

SL (Slimline) Corner Unit



Weight

| | |
|-------------------------------------|-------|
| Average Panel Weight: | 4kg |
| Average Weight per m ² : | 55kg |
| Weight per crate: | 960kg |

Coverage

| | |
|-----------------------------------|--------------------|
| Panels per m ² approx: | 10.75 |
| Panels per box: | 5 |
| Boxes per crate: | 48 |
| Panels per crate: | 240 |
| Total coverage per crate: | 22.3m ² |

CLASSIC ROCK PANELS™ REVEALS & COPINGS

THE FINISHING TOUCHES MAKE THE FINISH

Copings

Norstone's expansion and emphasis within the garden design area has seen the construction of numerous beautifully stone clad garden walls which has naturally created demand for charcoal and ochre copings.

The gentle tones of the grey copings are in harmony with the Norstone Charcoal rock panels, while the beautiful beiges are sympathetic to the Norstone Ochre Blend.

The Charcoal/Ochre Copings measure 1000 x 305 x 30 mm and sit proudly upon Norstone's Charcoal/Ochre Standard XLS and XLV ranges.

You too can enjoy all the pleasure these natural stone wall cladding can bring to your garden at surprisingly affordable prices.

Reveals

Our new reveals add the perfect finishing touches to the Norstone cladding around the windows and doors of your project.

Constructed in ebony basalt, they are flamed on top and bottom with one leading edge, with measurements of 1500 x 110 x 30mm and 1500 x 150 x 30mm.

Contact us today for advice or a quote.

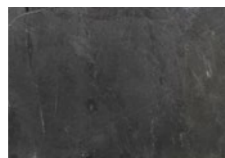


Charcoal Coping



Ochre Blend Coping

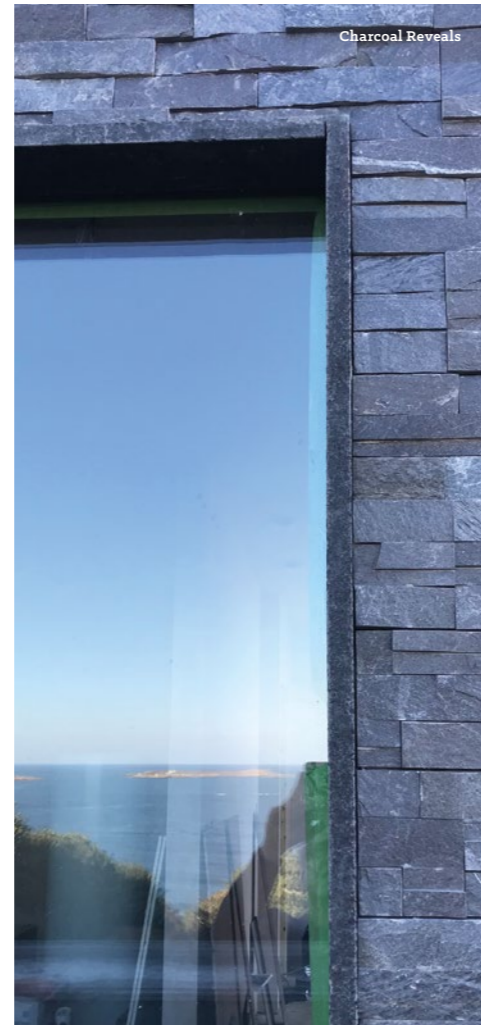
COPINGS OPTIONS



Charcoal



Ochre Blend



Charcoal Reveals

REVEALS OPTIONS



Charcoal



Platinum Lava Stone



CLASSIC ROCK PANELS™ CURVED WALLS

A STUNNING EFFECT THAT GIVES ANY SPACE THE WOW FACTOR

Stone cladding on a curved wall

Ever wanted to fit a stone cladding panel on to curved wall? Now you can with norstone® rock panels. Radius walls make a very interesting and distinctive design element to be used for residential and commercial applications. Let your imagination run free to create sensational feature walls that will enhance your indoor or outdoor living spaces.

Create a distinctive sculptural statement

Use a curved wall to sub divide a large open room or define a break in a large space to make a unique sculptural statement. The rugged texture of the 3 dimensional stone delineates the curvature of the wall to create a very edgy and impressive design. Curved or radius walls can be free-standing or part of an existing structure, the choice is yours.

Norstone's unique ease of use

Not only do our stone cladding panels go around corners effortlessly we can even negotiate the sharpest of bends and corners with ease. No wonder we are known as the Rolls Royce of natural stone cladding... amazing curves



CLASSIC ROCK PANELS™ MAXI

Maximum Scale Stone Veneer System

STONE CLADDING TO THE MAX

Available in Charcoal

We are world famous for our Rock Panel™ cladding systems, from the original XLS, to XLX, slimline SL and also oversized XLV - but what if big just isn't big enough?

Our *all new* MAXI Rock Panel™ stone cladding is the ultimate in rugged, textured stone cladding tiles, with a large, even layout for a very easy to assemble finish. Available in sumptuous charcoal, this cladding is for the bold who favour a strong expression of style, who dare to ask for more.

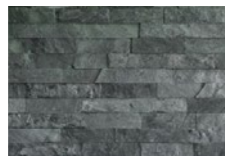
A chunky look, combined with chunky textures give this cladding a stand out effect that is bound to wow all-comers. As with all of our industry leading Rock Panel™ cladding systems, you benefit from Norstone's renowned style, high quality natural stone and craftsmanship - combined with long life warranty when installed in conjunction with Norstone and partners.

Our renowned charcoal natural stone panels are supersized with all new MAXI range and vary from 15mm to 35mm in thickness for a variable 3D look. We source our stone exclusively and our charcoal finish never fails to impress.

Like all natural slates, MAXI Rock Panel™ cladding may contain iron Oxide, which may mean when in contact with water, iron oxide may come to the surface creating a brownish look. You may apply the **Norseal H₂O** to the surface of the stone immediately after installation, which may reduce iron oxide effect. This can be a natural element with 100% natural stone slates.



MATERIAL FINISH OPTION



Charcoal

TECHNICAL SPECIFICATION

Material: Quartz.

Features: Highly calibrated interlocking stepped ends, industry leading corner design, natural ends, 3D rough hewn finish. Large, uniform height strips all 76mm high, with 15-35mm thickness. Corner units feature a swan cut end and a natural finish end.

MAXI Strip & Corner Unit Dimensions

| | |
|--|---------------------------------------|
| 610 Box: (0.37m ² per box) | 4@ 76mm x 610mm 8@ 76mm x 300mm |
| 460 Box: (0.26m ² per box) | 8@ 76mm x random length: 395 to 460mm |

Coverage

| | |
|---|-------------------|
| Boxes per crate: (28 standard 610 / 28 custom 460) | 56 |
| 1 set of 610 and 460 box: | 0.5m ² |
| Total coverage per crate: | 14m ² |



EXPANZ 3D™

Geometric 3D Modular Panel Stone Veneer System

A NEW GEOMETRY FOR EXTERNAL STONE CLADDING HAS ARRIVED

Available in stunning Platinum & Graphite Lavastone

We're delighted to introduce all new EXPANZ 3D™. Using the stand-out beauty and textures of our beloved Platinum and Graphite Lavastone, these all new stone cladding tile panels feature seamless joints and a bold, 3D façade created by alternating thickness of panel strips.

A very pronounced 3D volumetric panel construction gives this cladding a dramatic effect that quite literally stands off the walls! As with all of our industry leading natural stone cladding systems, you benefit from Norstone's renowned style, high quality natural stone and craftsmanship - combined with long life warranty when installed in conjunction with Norstone and partners.

Used extensively in our other territories, we're excited to bring these to the UK and see what projects can benefit from this unique look.



Platinum Lavastone EXPANZ™

Technical Specification:

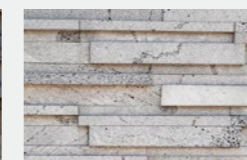
Standard Panel Dimensions
610mm (L) x 152mm (H) x 18-28mm (T)

- 6 Expanz panels per box
- One box contains 0.56m²
- 1 Expanz panel weighs 5kgs
- Average weight of box is 30kgs / 24 boxes per half crate
- 144 Expanz panels per crate
- 144 Expanz corner sets per crate
- Total coverage per crate is 13.5m²
- One half crate weighs 760kgs

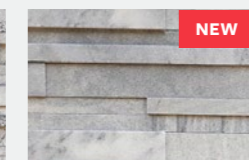
MATERIAL FINISH OPTIONS



Graphite Lava Stone



Platinum Lava Stone



Silver Grey Quartz



AKSENT™

Honed 3D Modular Panel Stone Veneer System

FULLY MODULAR WALL CLADDING

Discover our stunning Aksent™ stone tiles designed in our trademark modular form with all the accompanying installation benefits that brings. The natural stone tile range comes in basalt and marble and includes both internal and external tile corner modules to ensure a perfect, seamless fitting tile every time.

The beautiful appearance and smooth surface of the Aksent™ range is appropriate for both external and internal installations including wet areas. As they emulate our highly successful rock panel system and are finely calibrated, they will allow ease of installation and rapid coverage of a large wall. Once installed, grouting this stone wall tile is not required.

Norstone's Aksent™ panels are sophisticated and elegant and are incredibly hard wearing and environmentally sound. They embody depth of colour, natural character and a subtle inherent tile sheen that designers expect from premium natural stone wall tile products.

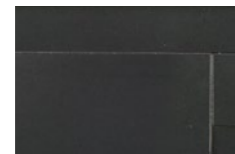


Aksent™ Grey Basalt

MATERIAL FINISH OPTIONS



Grey Basalt



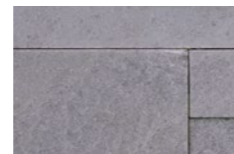
Ebony Basalt



Graphite Lavastone



Platinum Lavastone



Silver Grey Quartz



HONED, RICH COLOURS FOR VERSATILE DESIGN SOLUTIONS

The Aksent™ range is uncompromisingly contemporary. We've responded to demand to broaden our range with new colours and materials - basalt, quartz, lava stone.

Norstone Aksent™ is made from 100% natural stone, meticulously sourced from hand-picked quarries and fabricated to the highest standards for the most demanding markets around the globe.



TECHNICAL SPECIFICATION

Material: Basalt, Quartz and Lava Stone.

Features: Thin Stone veneer panels, highly calibrated interlocking ends, industry leading corner, natural end panels, smooth honed finish.

Single Aksent™ Panel



Aksent™ Corner Unit



Unit Dimensions

| | |
|---------------|-------------------------------|
| Single Panel: | 152mm x 610mm |
| Corner Unit: | 152mm x 400mm / 152mm x 200mm |

Thickness: 12-16mm

Weight

| | |
|-------------------------------------|--------|
| Average Panel Weight: | 4.5kg |
| Average Weight per m ² : | 49kg |
| Weight per crate: | 1075kg |

Coverage

| | |
|---------------------------|--------------------|
| Box Coverage: | 0.56m ² |
| Panels per box: | 6 |
| Boxes per crate: | 48 |
| Total coverage per crate: | 26.8m ² |

LYNIA™

Interlocking Smooth Stone Veneer Tile System

NATURAL STONE VENEER MADE LINEAR

The Norstone Lynia™ range of thin stone veneer tiles, is a refined lightweight offering with a finely honed surface that is silky smooth to the touch. Its streamlined sleek finish makes it a versatile and worthy alternative to conventional tiles.

These mesh-mounted tiles have random ends that are structured by hand in a meticulously formed interlocking element, focused on creating a seam free appearance.

Each Lynia™ stone tile unit consists of nine strips mounted on a thin base for ease of installation. Similar to any standard natural stone wall tile installation, the working surface should be prepared. The stone tile mats are fixed to the wall using a polymer modified tile thinset / adhesive and then grouted with un-sanded grout. Like most natural stones, our Lynia™ wall tiles are designed to be cut on a tile wet saw.

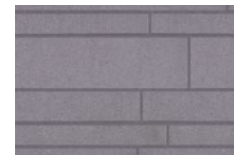
Create your own masterpiece with these interlocking tiles using a striking palette of colours to form a refined design concept.

The new Lynia™ range of stone tiles with an understated polished finish, are specifically designed for architects seeking an exquisite contemporary look, which is both linear and stylish.

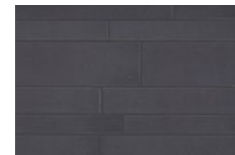


Lynia™ Ebony Basalt

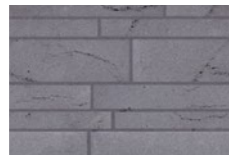
MATERIAL FINISH OPTIONS



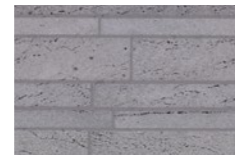
Grey Basalt



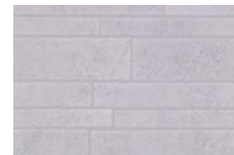
Ebony Basalt



Graphite Lavastone



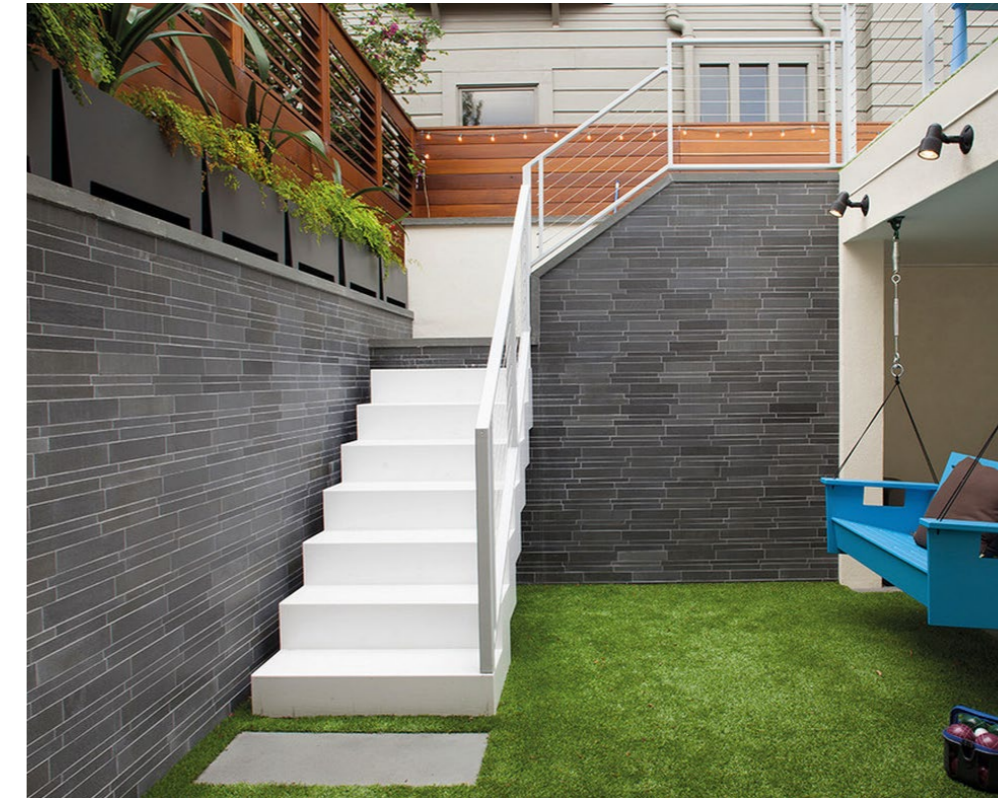
Platinum Lavastone



Silver Grey Quartz



"Glacier" White Marble



MODERN DESIGN IN LUXURY FINISHES

Lynia™ tiles are available in a wide selection of material finishes, for a huge variety of style and looks. Choose from Quartz, Basalt, Lava Stone and Marble and find the design solution that fulfils your dream design.

We offer classic quartz in Silver grey, smooth Basalt in Ebony and Grey and also Lava Stone; our honed, pitted volcanic effect basalt available in Platinum and a darker grey Graphite.

Owing to popular demand, we have introduced a cool, contemporary white marble.

With Lynia™, and other stone cladding panels requiring grouting, it is our recommendation that you pre-seal as above. This will make sure the grouting material cannot become permanently stuck to the main surfaces of the panels and makes the cleaning up process much more straightforward.

TECHNICAL SPECIFICATION

Material: Basalt, Quartz and Lava Stone.

Features: Interlocking edge profile, silky honed finish, smooth non-dimensional face. Mesh-mounted. Grouting required.

Lynia™ Tile Set



Lynia™ Corner Unit



Unit Dimensions

One set: 385mm x 305mm

Thickness: 12mm

Weight

Average Set Weight: 5kg
Average Weight per m²: 35kg
Weight per crate: 1235kg

Coverage

Set Coverage: 0.12m²
Sets per m² approx: 8.3
Sets per crate: 108
Total coverage per crate: 24.2m²

PLANC™

Large Format Stone Veneer Plank System

THE ART OF LINEAR WALL CLADDING

Planc™ is Norstone's first large format loose stone veneer, opening up the design possibilities for our clients like never before.

The long widths of each of individual strips make this product equally suitable for large commercial projects all the way down to the everyday fireplace, kitchen splash-back or feature wall use. The wider, longer format of this series allows the stone's inherent qualities to express themselves fully - from sprawling ancient mineral formations to subtle tonal variations, this new larger format system showcases natural stone at its finest.

Planc™ is equally suitable for modern and traditionally inspired design schemes.

Packaged three strips per set, with the height of the two smaller strips (60mm and 80mm) adding up to the 140mm height of the largest strip, the product can be laid in a variety of patterns including staggered, symmetrical, asymmetrical, or simply whatever catches your eye.

Using almost a decade and a half of experience in creating the highest quality stone veneer panels on the market, we've designed and manufactured Planc™ to be a highly calibrated system best set in a dry fit marble style installation without grout joints over flat vertical surfaces.

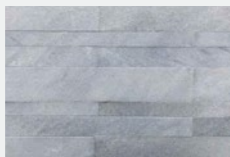
MATERIAL FINISH OPTIONS



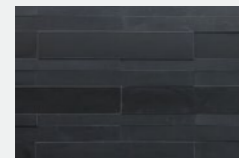
Grey Basalt



Graphite Lava Stone



Silver Grey Quartz



Ebony Basalt



Platinum Lava Stone



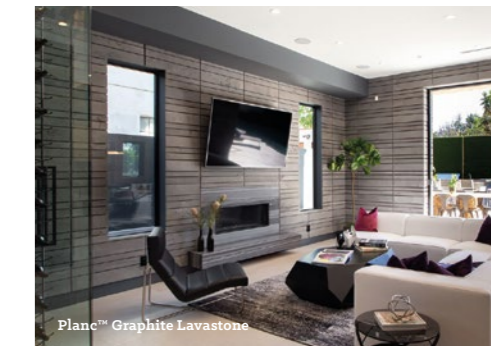
Planc™ Graphite Lavastone



Planc™ Lavastone Platinum



Planc™ Graphite Lavastone



Planc™ Graphite Lavastone



COOL, STRIKING COLOURS FOR TRULY MODERN DESIGN

Nothing is more popular in current design than the grey colour range, where the Planc™ series squarely sits. Whether a project calls for the consistency of the Grey Basalt, the natural markings and unique textures of the Platinum and Graphite Lava Stone, the light and bright Silver Grey Quartz or dark and mysterious Ebony Basalt, a Planc™ colour exists for any design scheme.

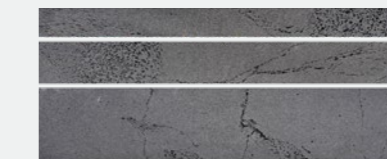
Norstone Planc™ Series Large Format Veneer is made from 100% natural stone, meticulously sourced from hand-picked quarries and fabricated to the highest standards for the most demanding markets around the globe.

TECHNICAL SPECIFICATION

Material: Basalt, Quartz and Lava Stone.

Features: All sets come with 3 individual pieces, which can be laid on site in numerous patterns. Adjacent example shown in optional interlocking layout.

One Planc™ Set



Unit Dimensions

One set comprises:
 1x 800mm x 60mm
 1x 800mm x 80mm
 1x 800mm x 140mm

Thickness: 20mm

Planc™ Corner Unit



Bespoke Planc™

1000mm wide x 150mm high

1000mm wide x 300mm high

1500mm wide x 600mm high

Any size within the slab dimensions shown here in Basalt or Lava Stone. MOQ: 100m².

Weight

Average Set Weight: 13kg
 Average Weight per m²: 58kg
 Weight per crate: 1435kg

Coverage

Set Coverage: .224m²
 Sets per m²: 4.5
 Sets per crate: 63
 Total coverage per crate: 14.1m²

RUSTIK™

Interlocking Traditional Effect Stone Veneer System

TIMELESS RUSTIC CHARM

Although we are known for the modern urban look our natural stone cladding panels provide, we have responded to numerous requests to introduce a traditional rustic product to our catalogue.

Few architectural features match the timeless and textural beauty of a natural stone wall. Designers and homeowners have been gravitating towards using rustic design elements that embrace more natural textures and create an organic vibe indoors and outdoors. This appears to be a trend that will continue strongly in the future and rustic stone walls offer a unique timeless way to incorporate this appealing design direction.

We have maintained the panel system used throughout our product range to combine timeless old-fashioned style with contemporary installation methods. Rustik™ features our trademark interlocking panels and the unique design hides the straight lines caused by concrete back panels. Mesh-mounted stone makes the panels lighter and allows adhesive to be applied directly to the stone.

Suitable for all the usual cladding uses and particularly suited to hard landscaping, barn conversions, fireplaces, cottages and any project that requires that extra level of authenticity.

MATERIAL FINISH OPTIONS



Charcoal



Ochre Blend



Aztec



Ochre Blend Rustik™



Charcoal Rustik™



A UNIQUE STYLE WITH EARTHY NATURAL FINISHES

Norstone Rustik™ all natural stone cladding construction creates a look that can normally only be achieved with a stone mason's expertise and skill. Now this new stone panel system can be installed by a skilled tradesperson who has the eye for detail.

It is truly an innovative new stone cladding product from Norstone and opens up a world of new design opportunities.

Rustik™ cladding range is available in a selection of natural finishes, including Charcoal and Ochre Blend (external and internal) and the eye-catching Aztec (internal only).



Aztec Rustik™ cladding panels

TECHNICAL SPECIFICATION

Material: Granite, limestone.

Features: Inter-Locking panels with key stones. Unique design hides straight lines caused by concrete back panels. Mesh mounted stone makes panels lighter and allows adhesive directly on the stone.

Rustik™ Panel



Rustik™ Corner Unit



Unit Dimensions

| | |
|---------------|-------------------------|
| Single Panel: | 425mm x 220mm |
| Corner unit: | 425mm x 220mm x 15/40mm |

Thickness: 15 to 40mm

Weight

| | |
|-------------------------------------|-------|
| Average Panel Weight: | 6kg |
| Average Weight per m ² : | 65kg |
| Weight per crate: | 877kg |

Coverage

| | |
|-----------------------------|---------------------|
| Single panel: | 0.935m ² |
| Panels per m ² : | 10.75 |
| Panels per box: | 4 |
| Panels per crate: | 144 |
| Total coverage per crate: | 13.5m ² |

WARRANTIES

PEACE OF MIND INCLUDED

Norstone rock panels weigh approximately 60kg per m², therefore it is critical that they are fixed to an appropriate substrate to ensure a successful installation.

Norstone products can be installed onto concrete, brick, suitable high density concrete blockwork or suitable backerboards (see below).

The background must be free from any dust, debris, paint or any other substance that will inhibit the bond of the adhesive. It must be stable and able to support the load of the selected Norstone product.

If the substrate is not even, we recommend applying a render coat to create a smooth, flat surface prior to fixing Norstone, using Laticrete 3701 Fortified Mortar* in accordance with the instructions in our technical library.

Warranties are available if used in conjunction with Laticrete MVIS. It is mandatory that local building codes be followed in the installation of Norstone rock panels. Please consult your building authority with any specific questions relating to the local building codes.

Knauf will guarantee their exterior Boarding (Knauf Aqua Exterior Boarding) to take a weight up to, including adhesive, of 75 kg per m². Any Issuance of a Norstone Warranty system which includes Knauf Aqua Boarding, is subject to Knauf products being purchased from Norstone UK Ltd. This is to ensure correct installation in order for warranties to remain valid.

Before ordering, consult the Norstone Masterguide and you can access further information on our Technical Library online. If you require any further information or clarification, call Norstone on 0203 17832801.

FOR INTERNAL APPLICATIONS:

10 YEAR DUAL LATICRETE/HARDIE WARRANTY

HARDIE CEMENT BACKERBOARD

While obviously being suitable for brick and block work, our natural stone rock panels weigh 65 kilos per m² (75 kilos with Laticrete adhesive) and are far too heavy for standard plasterboard. In the absence of a specialised product, we previously recommended the use of 18mm marine ply which was cumbersome and time-consuming to cut and install.

We approached James Hardie to see if they were able to offer a suitable product that could be warrantied. After extensive testing, the Hardie Cement Backerboard was warrantied to take up to 100kg per m² for internal stone cladding applications. This was the first time that builders, renovators, interior designers and commercial tilers alike could use a Interior product that it is easy to cut, lift and install and carries that all important 10 year warranty. Available in 6mm and 12mm.



FOR EXTERNAL APPLICATIONS:

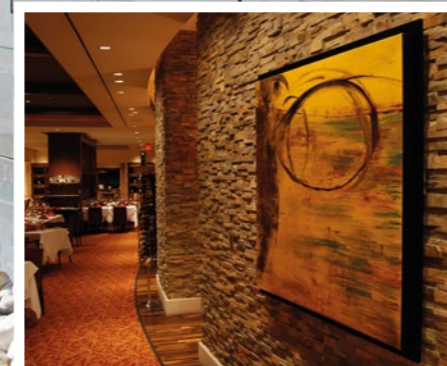
15 YEAR LATICRETE WARRANTY

KNAUF AQUAPANEL

We are delighted to add Knauf Aquapanel to our range of warranted substrates. A 15 year Laticrete MVIS warranty is available; more details available in our technical library online. Knauf Aquapanel Exterior to be installed as per Knauf UK project specific specification for use in conjunction with Norstone products. Please contact Norstone with project information to finalise your project specification – please provide elevations, plans and sectional details of the area.

NB For external Norstone cladding, the battening or framework the Knauf Aquapanel Exterior is fixed to should be at 300mm centres (max).

Final approval must be received from Knauf before warranties can be applied.



THE ULTIMATE ADHESIVE

We are proud to partner Laticrete, the world's most advanced and highly specified natural stone cladding adhesive.



The ultimate one-step, MVIS Adhesive mortar for interior and exterior installation of ceramic tile, stone, quarry tile, pavers and brick and is designed to just mix with water, has a long open time with unsurpassed initial grab, high shear, tensile and flexural strength along with excellent workability. We have developed an exclusive, comprehensive MVIS system which Laticrete will warranty.

Our long relationship has led to us being able to offer a unique warranty to give you complete peace of mind. Tried and tested over fifty years of Oslo winters, this premium product ensures that once our stone cladding is fixed it stays fixed!

We can supply our exclusive Laticrete MVIS with our stone cladding products as part of a one-stop service. Get a quote here

What the experts say:

"Regarding Laticrete - I have tested their MVIS in conjunction with our fibre cement tile backing products and found its bond to be considerably stronger than that of regular high quality tile adhesives. It is the only adhesive that we are comfortable with at this time for bonding Norstone to our boards."

Steve Twin
European Technical Manager
James Hardie Building Products Ltd

CARING FOR YOUR STONE CLADDING

LONG-LIFE PROTECTION

To reduce maintenance and cleaning and to give the stone surface the best possible long-life protection, it is recommended you apply a sealer to stone cladding.

Norstone supplies 3 different types of penetrating sealants to best suit for your particular choice of stone.

Norseal H2o Sealant >

Best for Norstone Rock Panel range.

Lavaseal >

Best for Lava Stone Platinum in the Planc™, Aksent™ and Lynia™ Range

All-in-One Rapid Dry stone impregnator & sealer >

Best for basalts, silver grey, graphite Lava Stone.

Please be aware that this sealer may darken the stone slightly. Do a test sample before full application.



With the majority of our stone cladding, grouting is not required - however where grouting is a consideration, we have specific guidance for best practice:

PLANC™ Sealing Guidance


Pre-sealing prior to setting should be considered depending on the stone selected and the environment it is to be installed in.

When pre-sealing, ensure that the product used is appropriate to work in conjunction with the selected tile adhesive. We would recommend that the Lavastone Platinum and Graphite, should be sealed prior to installation. This will reduce any chance of finger staining during installation.

Otherwise, most Planc Series colours should be sealed with Lavastone Sealant, a penetrating water based sealant. Different sealers can produce different effects on the stone, so be sure to test the sealant on a sample or off-cut of tile before applying to the entire project.

Lynia™ Sealing Guidance

Apply Norstone Lavastone sealants, depending on what type of Lavastone please refer to "Stone Care and Protection Guidance" in the Norstone Masterguide document, this will determine the type of sealant required for the particular stone using a lint free cloth to the Lavastone tile before installing. Once dried it is ready for installing.

 The incorrect choice of sealants may effect the ultimate look of the stone. Please consult the technical documentation available on the website or call us to discuss your requirements to ensure you use the correct sealant. We strongly recommend a small test area before application.

IMPORTANT: It is important before purchase to read the Conditions of Sale, Norstone Technical Library and Norstone Masterguide which can be viewed on www.norstone.co.uk. Please contact us if you have any technical queries.



A CHOICE OF SAMPLES AT YOUR DISPOSAL

Free for commercial clients and available with a small refundable deposit for private clients, we are happy to provide a selection of sample of the current Norstone ranges.

Often, images do not completely satisfy the senses and the tactile, hands-on feel for the stone is needed to truly appreciate both the quality and the textures of our natural stone cladding.

We supply sample boxes, with small swatch elements for our popular Rock Panels™, Planc™, Aksent™, Lynia™ and now also the Rustik™ range too.

Further to this, we can also supply complete panel samples where required.



SUSTAINABILITY / ETHICAL POLICY STATEMENT

NORSTONE SUSTAINABILITY POLICY

Raw Stone Material:

Whilst our natural stone materials are sourced from within Vietnam, manufactured, and then shipped worldwide, Norstone is aware and sympathetic to growing concerns for sustainability.

In addition to the benefits of using natural stone as a building material, which has proven to be one of the most sustainable materials throughout the course of history, we've also recognised our responsibility to employ sustainable products, processes and ideas throughout our manufacturing facility.

Norstone only procures stone material from licensed and government approved stone suppliers. These stone suppliers and their quarries are monitored by local government agencies to ensure that only appropriate and assigned areas are quarried and that the environment is not affected in an adverse manner.

Government regulations ensure that there is strict control over areas that are allocated to be quarried and areas such as national parks are protected from illegal mining. Companies with quarry operations must adhere to regulations such as method of quarrying, run off or disposal of waste residue, workers rights etc.

When a lease has expired the company is required to restore the area that has been quarried which includes regeneration of plants and fauna.

Norstone does not procure raw stone material such as pebbles from environmentally sensitive biosystems such as rivers. Because we believe so strongly in the protection of river systems we will never trade or process pebbles.

Water:

Norstone uses 3 sources of water during the manufacturing process: town supply, rain or storm water and recycled water. We have large underground water retention tanks to capture the storm water, especially during the rainy season.

One large water retention tank is designed to capture the waste water runoff from the machinery and cleaning area. This waste water is treated, filtered and pumped back through the water supply for these areas. The silt from the waste water is disposed of and used in road building and landfill because when it solidifies it is very indurate, non toxic and stable.

Recycling water has allowed us to substantially reduce our consumption of town water to the extent where usage is negligible.

Production:

The manufacturing of our natural stone products does not produce any toxic by-products and virtually zero air pollution. We only use low-VOC adhesives which help limit harmful emissions to our environment on our natural stone products that require bonding with adhesive.

Energy:

The energy consumed in producing Norstone products is negligible compared to man made products such as Ceramic Tiles because our products are predominantly hand-made. We have invested in machinery, equipment and fittings that are energy efficient to further reduce energy consumption.

Lighting:

Our modern manufacturing facility has very good natural lighting due to the effective use of sunlight to illuminate the internal working areas. This helps to considerably reduce energy consumption without compromising thermal protection and comfort, plus artificial lighting can produce a lot of heat.

Packaging:

Our wooden crates are made from recycled timber or timber from wooden crates and pallets that are imported into Vietnam. This recycling of timber helps to reduce the impact on local forest industry especially the nascent timber plantations. Norstone is opposed to illegal logging or destruction of virgin rainforests and does not use or encourage the supply of timber from such locations.

Waste:

The stone waste and off cuts generated in the manufacturing process are used by local construction companies for the building of roads and foundation for housing. We use recycled waste water for cutting of the natural stone and capture rain water for cleaning of our products.



NORSTONE ETHICAL POLICY

Norstone has a very strict ethical policy which ensures that the welfare and working conditions in our South East Asian manufacturing facilities are of the highest possible standard. We have built a brand new manufacturing plant that is equal to if not superior to many in the Western world.

Our appointed distributors from around the world are encouraged to visit our premises regularly to see for themselves how their orders are being processed and view the entire manufacturing process and discuss any issues or concerns they may have. Generally they are surprised at the working conditions and the superior manufacturing facility we have and appreciate our efforts to constantly improve.

We place a significant importance on the welfare of our workers and we offer free accommodation, meals and healthcare for our staff.

Norstone has a trust fund for educating local children. We care deeply about our environment and our community.

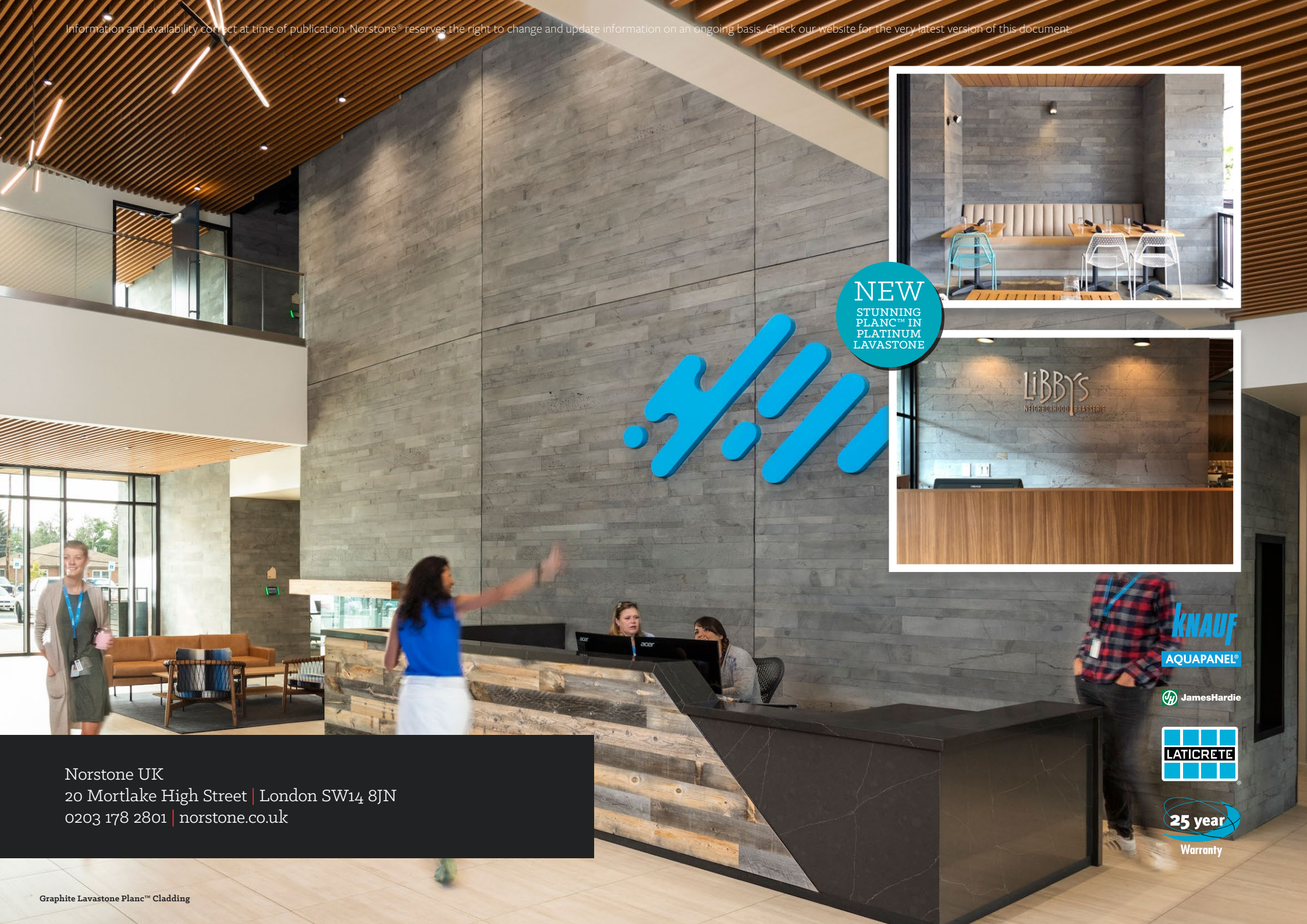
We have constant reviews of our safety regulations and provide regular on-site training to ensure a safe and productive manufacturing process. We believe that by providing a decent and caring working environment a happy, healthy worker is an efficient, effective and above all else, safe worker.

Before an order is placed with any new stone suppliers we visit their quarries and processing facilities to view for ourselves the working conditions and our high expectations are discussed at length. We believe that supporting companies who share our values will continue to lift the general standard of the local stone quarrying industry.

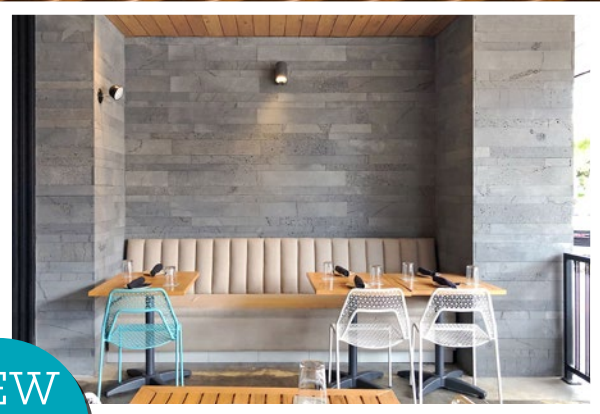
Our trading with the local stone suppliers is of immense benefit to all concerned since the revenue earned stimulates the local economy, which in turn improves the living standards of those people who previously struggled with a subsistence lifestyle.

We are committed to the belief that it is important not to discard worker safety, environmental protection and quality control in the relentless pursuit of competitiveness to drive pricing down.





NEW
STUNNING
PLANC™ IN
PLATINUM
LAVASTONE



KNAUF
AQUAPANEL®

JamesHardie

LATICRETE

25 year
Warranty

Norstone UK
20 Mortlake High Street | London SW14 8JN
0203 178 2801 | norstone.co.uk